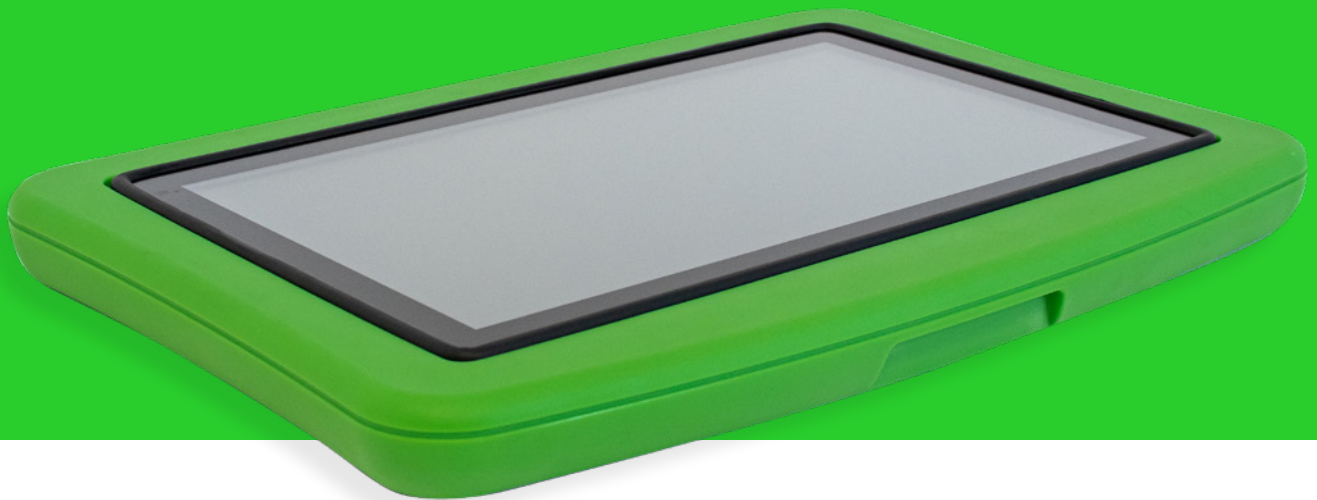


# FunBoard



FunBoard is a giant interactive surfboard for children. With a thinner and more portable design than its larger sibling, the FunTable, Manico's FunBoard can be mounted on the wall or laid on a table or the floor.

The portable design widens both the usage possibilities and user group, making the FunBoard a digital playground and an educational companion for all ages, solving a wide scope of needs for kids, adults, and even the elderly.

Inclusive by design and charged with exclusive software offerings, FunBoard unlocks endless possibilities for collaborative entertainment and joyful learning.

What makes Manico's FunBoard unique is that multiple users can simultaneously point, draw, click around and interact with the on-screen content. Its robust build can sustain playful handling and heavy traffic of users.

FunBoard fits well in a wide range of indoor environments and is commonly used in museums, libraries, elderly homes, gyms, shopping centers, waiting rooms, hospitals, and airports, to name a few.

## Features

- Interactive 32" touch screen built into a stable, colorful and durable box.
- The screen is made of thick, hardened, anti-reflex protective glass.
- Easily connected to the mains and wifi.
- Comes with over 50 preinstalled EdUp and PlayEd apps.
- Additional learning and entertainment apps can be easily downloaded from Manico's own catalogue, as well as 3rd party providers.







# FunBoard



<b>CPU</b>	Rockchip RK3399 Dual Core Cortex-A72+Quad-Core Cortex-A53 CPU
<b>GPU</b>	ARM Mali-T860MP4 GPU
<b>RAM</b>	4GB
<b>ROM</b>	32GB
<b>DISPLAY INTERFACE</b>	LVDS interface (single, 6 dual, 8 dual) Support the maximum resolution of 1920×1080, support 32" EDP screen interface, support max resolution 4K
<b>DISPLAY VOLTAGE</b>	12 volt
<b>TOUCH SCREEN</b>	Multi touch screen P-Cap
<b>INTERNET</b>	Wifi & BT module, support for Wi-Fi 802.11b / g / n / ac protocol. Support BT4.0
<b>REAL TIME CLOCK</b>	Built-in real-time clock battery
<b>OPERATING SYSTEM</b>	Google Android 9
<b>INTERFACE</b>	Support MIPI interface camera 4*USB HOST (support usb peripheral as, usb camera@500W usb printer, USB disk, mouse, keyboard 2 sets of UART, 1set SPI or 1 set UART, 2 sets of SPI. Supports external serial devices (NFC module, printer, card reader, etc.) SD card, maximum support 64GB Class D amplifier: 1.5W * 2, 8 ohm, support for the microphone
<b>PICTURE</b>	Support for JPG, BMP, PNG and other image formats Browse and support rotation / slide show / image zoom function.
<b>POWER ADAPTER</b>	Input 3-6 A, Output 3-6 A, DC12V
<b>WEIGHT</b>	17kg
<b>DIMENSIONS</b>	Lenght: 940mm Width 646mm Thickness 80mm
<b>MULTITOUCH</b>	Multitouch with 10 touch points
<b>COLOR</b>	Green, Black, Ocean Blue, Red love, Yellow, Turquoise