

Connecting people with technology

IMPACT Max

info@toomeyav.ie

IMPACT Max Available in a range of sizes

65" | 75" | 86"

Audio

2 x high powered 16W speakers for crystal clear sound quality from anywhere in the room.

Remote Management

View, control, update and troubleshoot remotely. Your IT office can work on your Clevertouch screen without needing to come to the classroom. You'll always have the latest versions of apps and software without needing to install any files when you should be teaching.

Cloud Accounts

Sync with your Cloud accounts so that you can work anywhere at any time.

 Google Drive  OneDrive

High Precision Technology

Our patented Super Glide Touch technology offers the most fluid writing experience on a touchscreen. It's as smooth as writing on a whiteboard - with no lag. With the ability to differentiate between palm-erase, fingertouch, and stylus-writing, there's no need to change settings mid-flow.

Clevershare

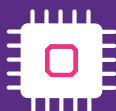
Screen mirror with images, video and audio.



What's New?



Built-in array microphone - all lessons can be recorded with sound



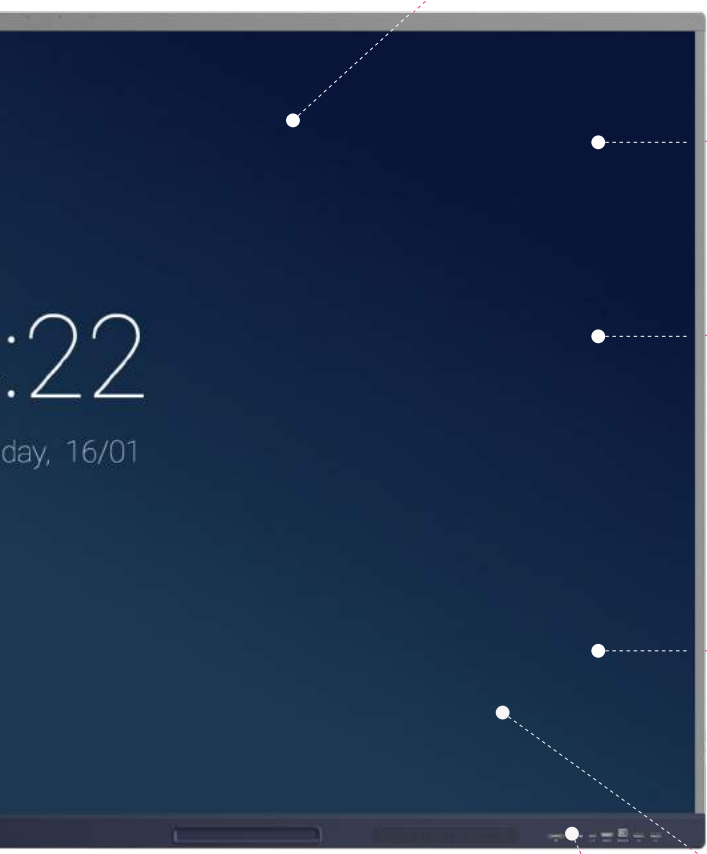
4GB RAM
32GB ROM



Latest generation USB-C with charging and hardware optimization



2 x 16W speakers for room-filling sound



LUX 11.0



Easy to use interface. Simple, quick, intuitive apps and gestures designed to make everyday tasks seamless.

Cleverstore 3.0



Access hundreds of free teaching apps to make lessons more engaging.

Comprehensive Warranty

No ongoing subscription charges.

Infinity Whiteboarding

Never run out of space with our infinite canvas. With numeracy tools, handwriting-to-text recognition, and the ability to insert images and shapes, all of which can be saved, printed or shared to student devices.

Connectivity

Huge connectivity including one of the latest USB-C ports with charging ability.

LYNX Whiteboard

Whiteboarding made easy with a huge selection of pen & art tools to choose from.

Built-in light sensors



Android 11

IMPACT Max is powered by Android 11.





Quick Launch Menu for instant teaching tools

Your most commonly used apps are available with one touch and are easily accessible via the Quick Launch Menu.



The Clevershare App is free to download and compatible with Android, Windows, iOS and Chrome devices. Up to 50 devices can connect with the Clevertouch screen and share content – images, video, and audio. The presenter has full control over what is shared, and can show up to 6 device screens simultaneously, increasing student collaboration and participation within every lesson. Now includes touch-back.



Make notes, diagrams or images, add and scroll through multiple pages, insert an image or change the background colour. Now includes handwriting and formula recognition.



Double click on files to open them, as well as easily copy, cut and paste, so it's just like using a PC. Personal Cloud Storage integration.



Explore the internet without needing a computer, using the IMPACT Max, Chrome and Chromium browsers.



Cleverstore contains hundreds of apps in all subjects and a range of languages, including literacy, STEAM and languages. Each app is tested by our team, to make sure no adverts, in app purchases, or inappropriate content gets through. We've partnered with the most popular educational app developers to give you apps that you can really make use of in the classroom.



Easily go back to recently used apps using the Active button with split-screen mode.



Protect your Clevertouch with a password by using Lock.



All of your integrated and Cleverstore apps can be found here.



All your favourite apps in one place, including Settings.



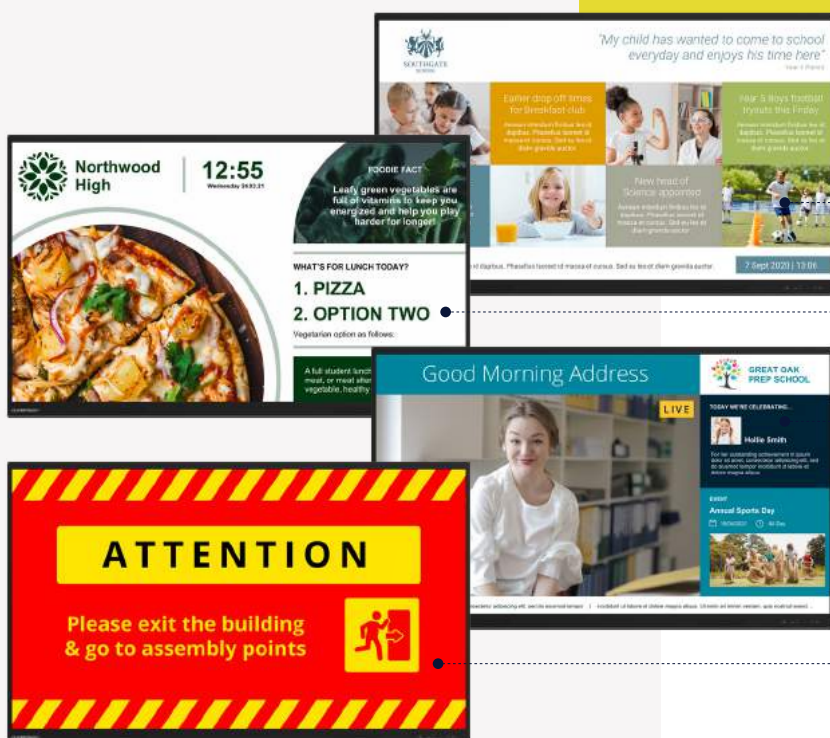
Exclusive to Clevertouch

ClevertouchLive App: Messaging

With ClevertouchLive App your IMPACT Max isn't just a screen for teaching or presenting, it's also a communications tool. Use it to broadcast messages, alerts and important information to students, staff and visitors.



Flexible Messaging Solutions



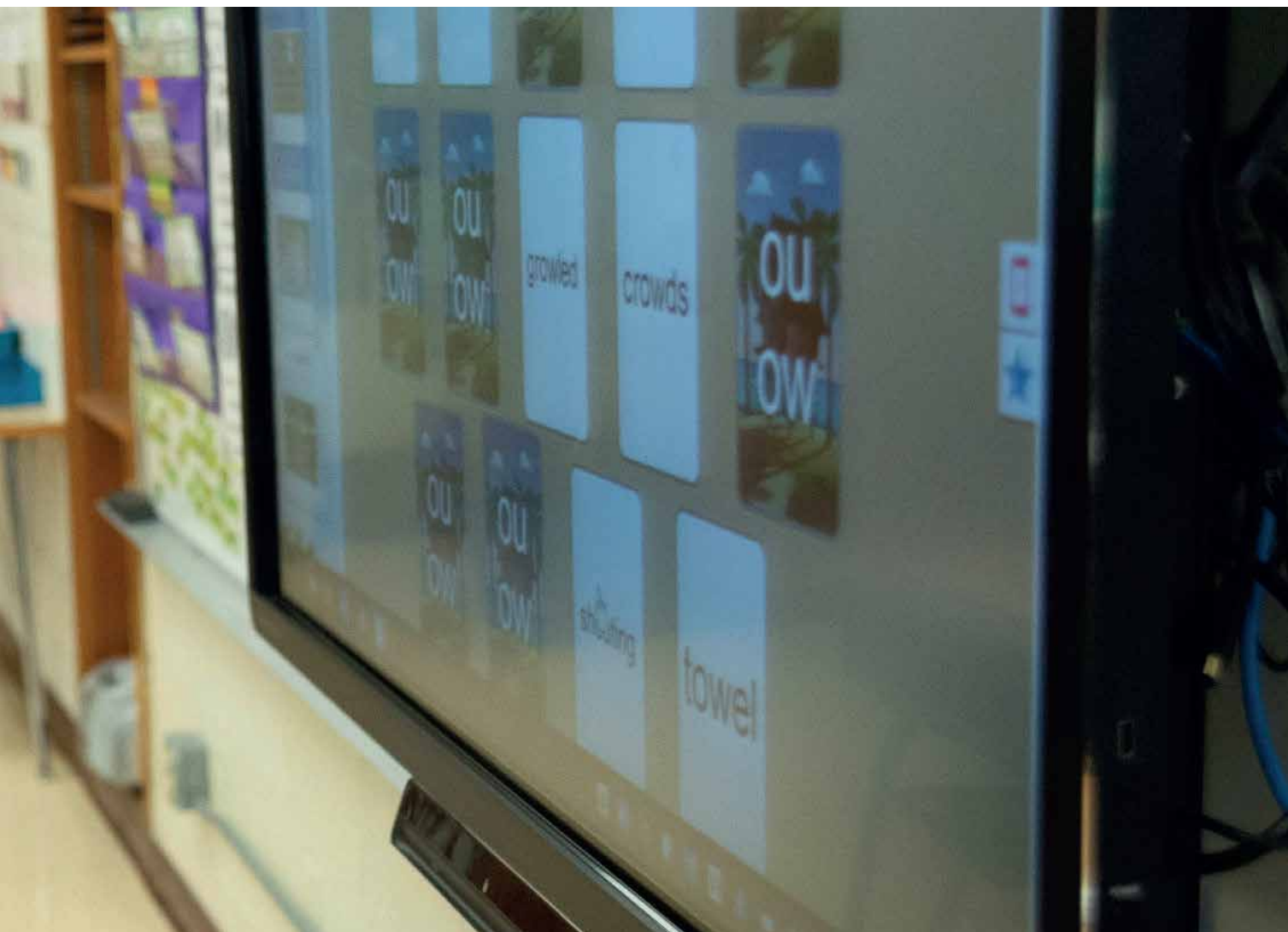
- Daily news and activities
- Weekly lunch menu
- Live video messages from the school office
- Emergency announcements and fire drills



Dynamic and integrated

ClevertouchLive: Home Screen

Customise your home screen so it's unique to your school or district. With the ClevertouchLive App, you can group screens so they are representative of your messaging and create user and group profiles.

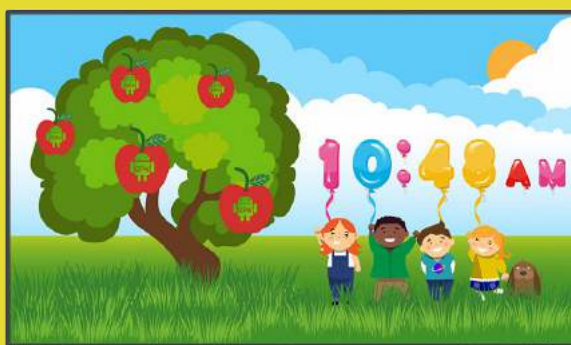


Personalise your launcher page

- Group by subject, schools, age group, campus, district and more - it's totally flexible
- Show the apps you want. Either from the Cleverstore, or add your own
- Lockdown settings so teachers have to stay within your guidelines
- Add your school logo, colors and background images
- Custom clocks

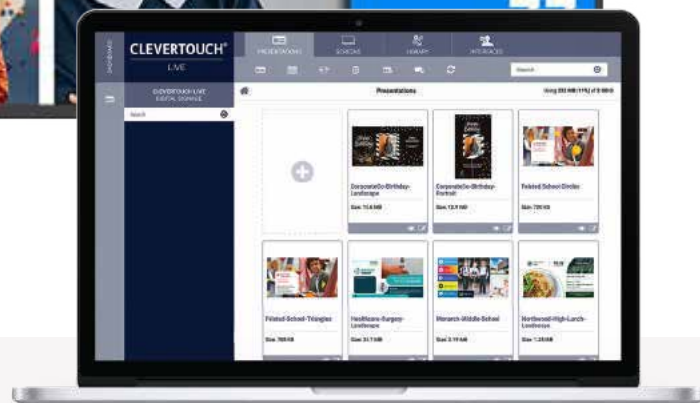
It's simple!

- 1** Go to [ClevertouchLive.com](https://clevertouchlive.com)
- 2** Sync your IMPACT Max screen
- 3** Choose your launcher





Create teacher or group profiles
Log into any connected screen in your district and get your apps, home screen, settings and more.



Dynamic and integrated

ClevertouchLive

ClevertouchLive is the Content Management System Platform (CMSP) for all Clevertouch Technologies innovations.

Personalise your launcher page

- Display digital signage messaging when it's not in use.
- Add apps from the Cleverstore or upload your own apk files - send to all your interactive displays without needing to manually install them on individual screens.
- Send alerts and announcements to your audience.
- Weather warnings, stranger alerts, fire alarms.
- Call staff/students to other locations.



Increase Student Engagement

Cleverstore 3.0 NEW

It's easy to hold students' attention when there's something new on the screen. We've hand-picked apps from educational app developers that support Common Core State Standards in the US and the National Curriculum in the UK.

Apps for everyone

With apps for all ages and in most subjects, there are loads to choose from to help support your lessons. From Coding to Math, Literacy, and Science, as well as games and stories, Cleverstore has everything you could need.

Dual language

Not only are most of our apps available in a variety of languages, but some also support dual language, allowing you to teach languages such as French, Spanish, and German as you go along.

A store you can trust

Our App Team checks every app that's submitted to the store so there is no inappropriate content. We want to enable teachers to download apps as lesson resources – so all apps are suitable for the classroom.



NEW

Cleverstore 3.0 is now browser-based.
Create your account at Cleverstore.com

Clevershare 5

Collaborate with ease - connect up to 50 devices, including phones, tablets and laptops. Screen mirror with images, video and audio.

With touch-back for two-way control, the presenter has full control over what is shared and can show 6 screens simultaneously, increasing collaboration and participation within every session.

Share content with any device

Up to 50 devices can connect with the Clevertouch screen and share content – images, video, and audio. Now with touch-back for two-way control.

The presenter has full control over what is shared and can show up to 6 device screens simultaneously, increasing collaboration and participation within every session.

Mastering Mode

This optional mode will allow you to manually accept or reject from the Clevertouch screen when someone attempts to connect via Clevershare.

Chromecast and Airplay

There is an optional button you can swipe in the settings that will allow you to natively connect your device this way.

Clevershare App

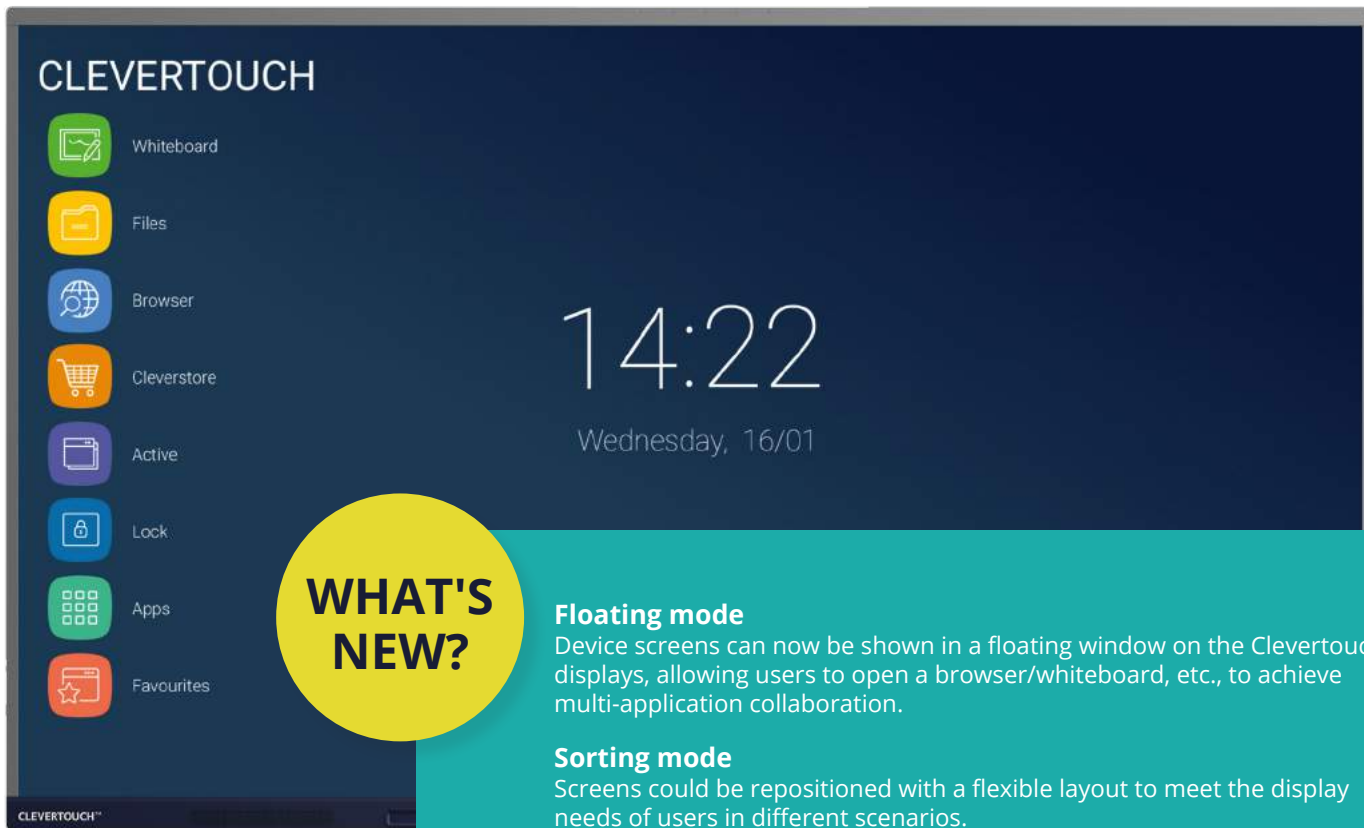
Any device can download the Clevershare App and connect instantly by typing in the code on the Clevertouch screen. Clevershare App is free to download and compatible with Android, Windows, iOS, and Chrome devices.

Clevershare Dongle (optional extra)

Use the USB-C Clevershare dongle to share content. No need to download any app or driver, so ideal for companies that do not allow downloads to devices.

How to connect

You can connect via the Clevershare App if your device is on the same Network as the Clevertouch. Use Advanced Mode for additional encryption and dual sub-networks. There is a Hotspot option if you are unable to use the network.



WHAT'S NEW?

Floating mode

Device screens can now be shown in a floating window on the Clevertouch displays, allowing users to open a browser/whiteboard, etc., to achieve multi-application collaboration.

Sorting mode

Screens could be repositioned with a flexible layout to meet the display needs of users in different scenarios.

Image quality

Optimized casting image quality, three kinds of clarity can be selected: ordinary, better, and excellent.



Optional Extra

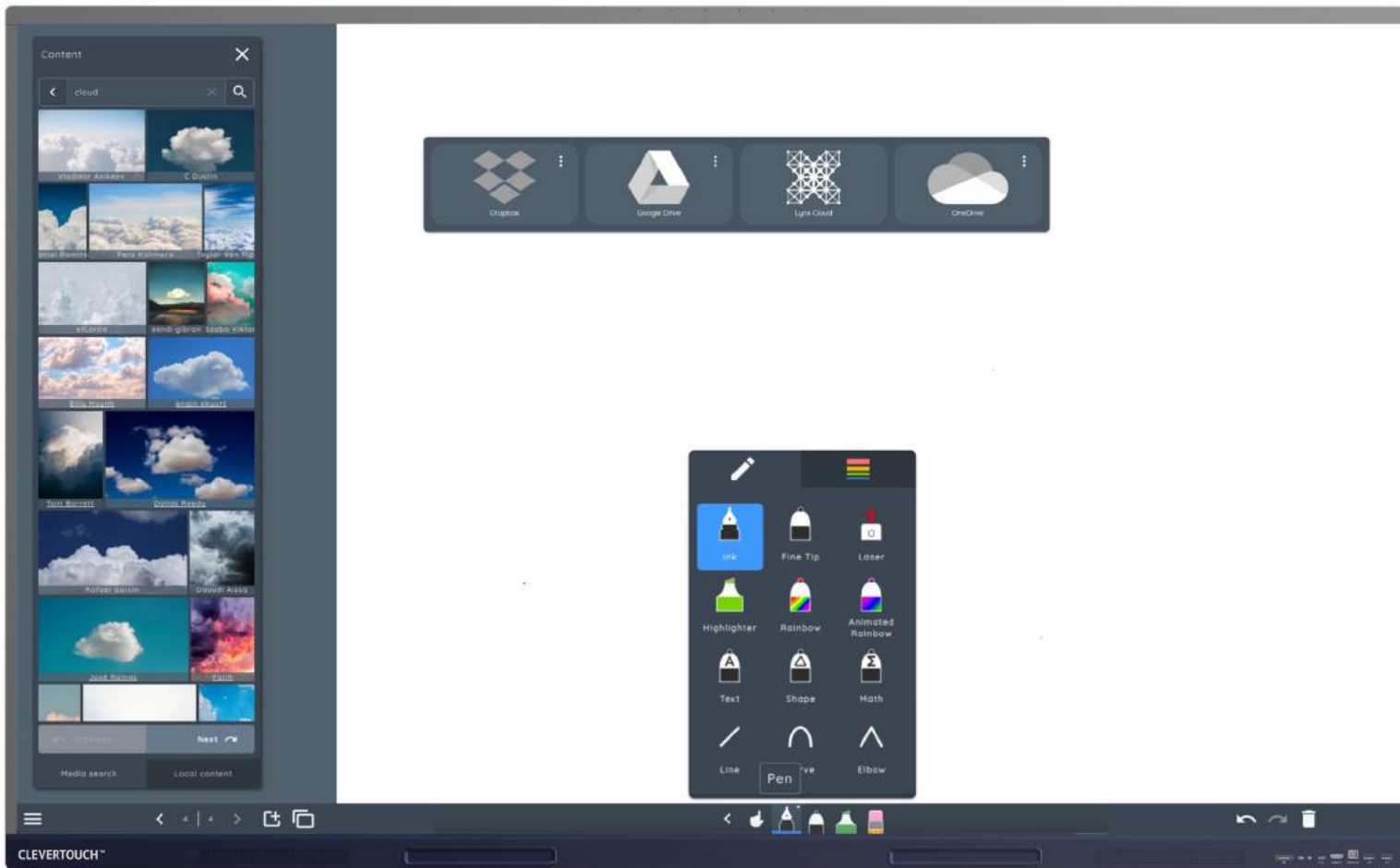


Clevershare Dongle

- USB-C connection
- Compatible with IMPACT Max
- Works in conjunction with the Clevershare app

Clevershare App

- Works on any device
- Free to download
- Compatible with Android, Windows, iOS & Chrome Devices



Whiteboarding made easy with a huge selection of pen & art tools to choose from

LYNX Whiteboard

The most dynamic, intuitive user experience of any whiteboard – completely redesigned for a touchscreen, with drag and drop, pinch to zoom, and easy swipe menus.



LYNX Whiteboard has now partnered with PhET to give you over 80 FREE STEM activities to use in your classroom or set as homework.



Captivating Lessons

Natural handwriting

Our new pen type allows users to have a more natural feel to their writing. Pressure and velocity will help to decide the thickness of the line as the user writes – like a real pen.

Multi-Purpose

Split the screen so that you can look online while your lesson is open, and drag content across.

Dual Pen

Two users can choose different pens, or different tools, and use them simultaneously, providing a more natural feel.

Increase student Engagement

Search videos from YouTube, images from Unsplash, panoramic images – all without leaving your app. Safe Search enabled, ensuring content is suitable for children.

Get Creative

With dozens of teaching tools at your fingertips.

Fun, Shareable Activities

Create your own activities with customizable content. Activities will automatically be saved to your LYNX Cloud, so that you can share them with colleagues.

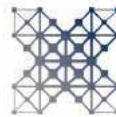
Collaborate with ease

Students can scan a QR code with their personal device and either join the activity during the lesson, or save it to do at home.

Quickly switch formats

Convert files from Office formats into LYNX files, ready to be used within LYNX. Word, Excel and PDF files can easily be converted. Drag interactive whiteboard or Smart Notebook files in bulk and they will automatically convert into a LYNX file.





Cloud access for distant learning with LYNX Whiteboard

Hundreds of tools to increase student engagement in a blended learning environment.

Access the cloud & Log in from anywhere

Create lessons on the go, at home, or in another classroom, on any device.

Your school can set up a LYNX Cloud account, so content and resources can be shared.

Great for distance learning

Set work, deploy and give students their own log-ins.

Download & Upload

Log into any Clevertouch and download your LYNX files, great if you aren't in your usual classroom.

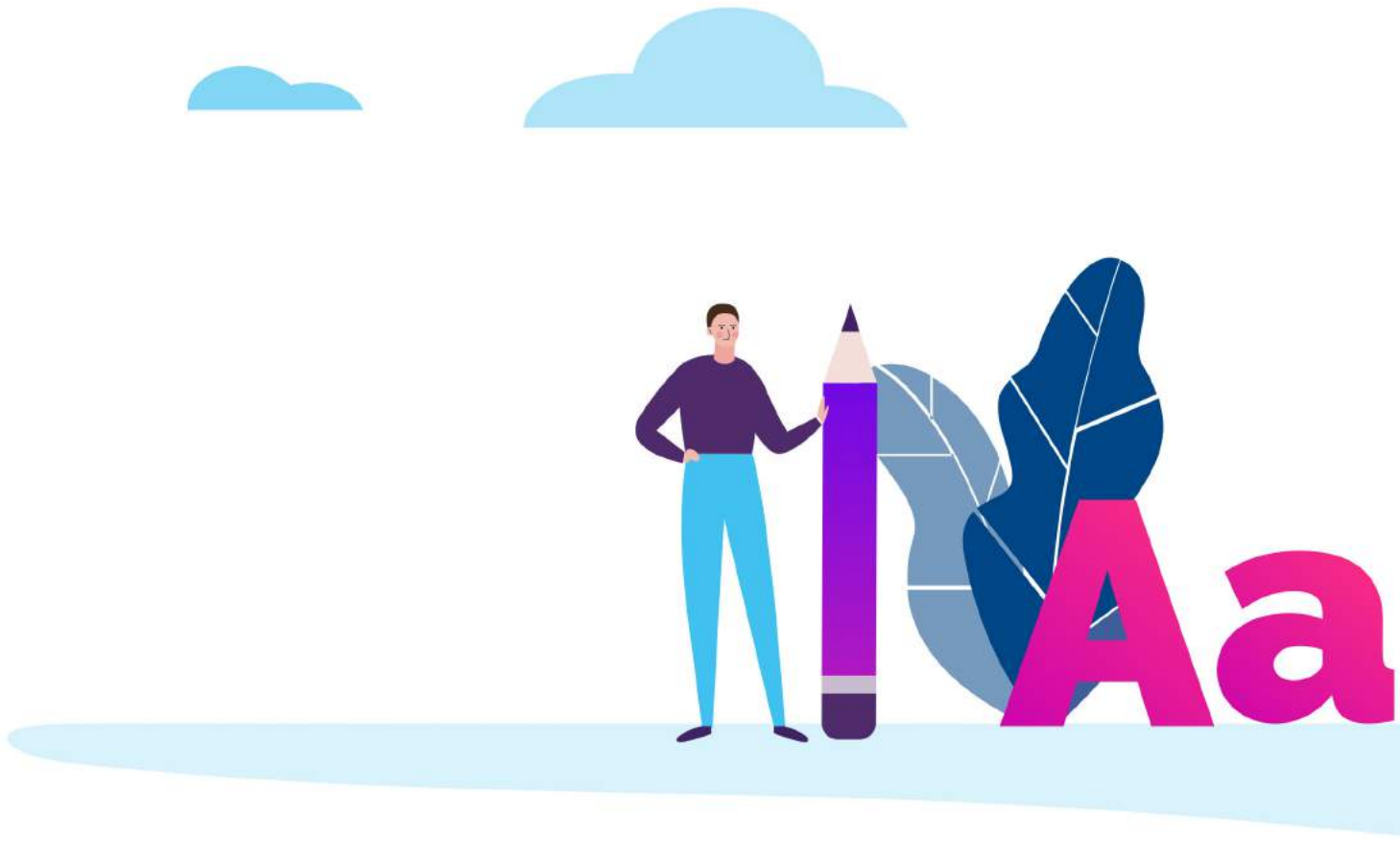
Set Homework

Set homework activities for your students

Sync with other cloud-based drives

Get content from Dropbox, OneDrive, LYNX Cloud or Google Drive and input it directly into your lessons





Snowflake

Educational software that brings interactivity to your school and boosts classroom engagement by using Smarter Human Interaction. Snowflake enables teachers and students to tell engaging, interactive stories that align closely with the curriculum, it provides a safe community for online and small group collaboration, and it allows simultaneous personalised instruction making curriculum relevant to students' lives.



Zones

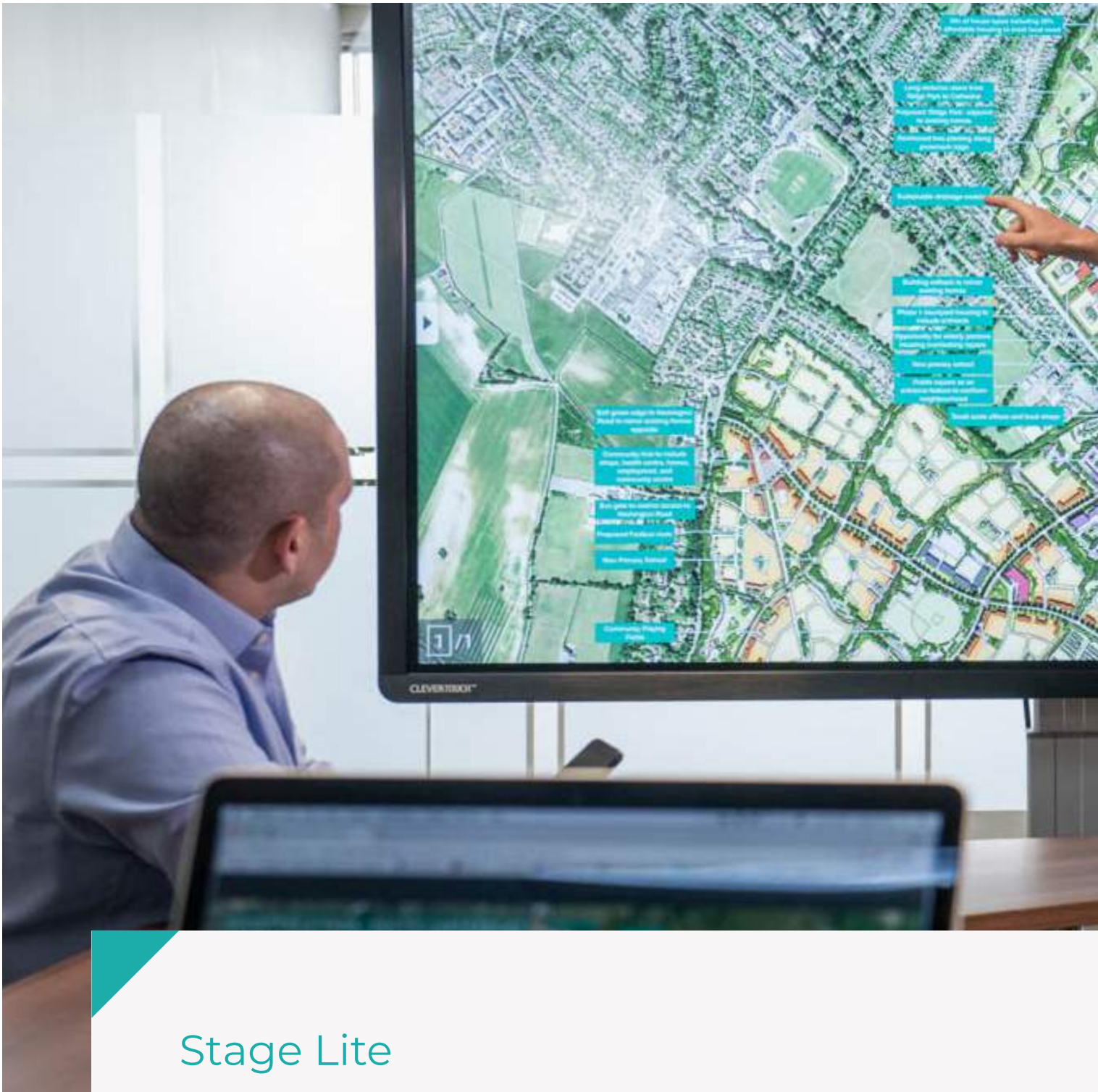
Snowflake is the only educational technology software allowing you to divide your touchscreen into independent, personalised zones. Snowflake transforms the classroom into a fun, motivating, and engaging active learning environment.

Personalised Learning

Together with its online version, Snowflake creates an active learning system well adapted to personalised learning. It enables educators to choose the teaching resources that work best for their students and display different content and activities in a different Zone.

Providing the right scaffolds

Every age and subject has different needs; Snowflake offers a unique configurator that allows the schools' IT Administrator to select the appropriate scaffolds of both tools and content their teachers need.



Stage Lite

Stage is a hassle-free unified communications solution designed for both on-site and distributed teams. Its clean interface and intuitive functionalities constitute a tool that makes collaboration easy and work more efficient.



Clevertouch have partnered with NUITEQ to bring you a special version of STAGE.



NUITEQ[®]
STAGE Lite

Collaborative Whiteboard for hybrid working and learning

Work together in real-time to annotate documents and create whiteboards.

Chat

There's an inbuilt text-chat feature.

Import Lessons

You can import lessons from Snowflake and work on them together

Browser Based

Anyone can join, as long as they have the meeting code - there's no need to download any software

No Download Required!



Get started today in 3 simple steps:

- 1** Visit [Stg.Live](#)
- 2** Enter your code
- 3** Start Collaborating



Take Control

Remote Management

IT departments & administrators can take control, without needing to leave their office. Control multiple Clevertouch devices by linking your entire fleet of Clevertouch screens to your Remote Management MDM account, so that you can control them from anywhere.



Update or remove apps

With the functionality to add .apk files to some or all of your Clevertouch displays, your organisation can always have the latest apps available to use.

Over-The-Air updates

Our OTA updates are just one click away to get the latest firmware on your screen. We will never charge you for firmware updates.

View status information

IT managers can troubleshoot without needing to leave their office. Look up individual Clevertouch screens, view the display in realtime, edit settings, or restart devices remotely.

Group and tag

If you have a group of screens being used by a certain department, you can deploy the same apps and settings, so that there is a standardised experience for everyone in that department.



CLEVERTOUCH[®]

TECHNOLOGIES

by Boxlight[®]

IMPACT Max

Delivering a truly intuitive and collaborative experience, IMPACT Max is so much more than just an interactive touchscreen.



Display

Size	65 inch 75 inch 86 inch
Panel Type	ADS
Response Time	5ms
Aspect Ratio	16:9
Display Area	1428.48(H) 803.52(V)mm mm 1649.664(H) 927.936(V)mm 1895.04(H) 1065.96(V)mm
Pixel Pitch	0.372(H) 0.372(V)mm 0.4296(H) 0.4296(V)mm 0.4935(H) 0.4935(V)mm
Resolution	3840(H) 2160(V)
Refreshing Frequency	60Hz
Display Colour	1.07B(10bit)
NTSC	72% 72% 68%
Contrast Ratio	1200:1
Viewing Angle	178° (H/V)
Back Light Unit	DLED
Brightness with glass(typ)	400cd/m ²
Life Time	≥50000 Hours

Operating System

System Version	Android 11.0
RAM	4G
ROM	32G
CPU	A55x4
GPU	Mali G52MP2

Touch System

Sensing Type	Infrared recognition
Touch Tool	Passive infrared pen
Accuracy	± 1.5mm
Touch point	20 points touch
Minimum object size	3mm
Writing Height	≤3mm
System	Windows10/Windows8/Windows7 /Windows XP/Android/Linux/Mac OS X/Chrome

Audio

Sound Channel	2.0
Output Power	2 x 16W

Microphone

Array Mic	6 Mic
Voice Pickup Distance	8m
Sampling Frequency	48kHz
Signal Processing Frequency	16kHz
Pickup Pattern	Beam Forming

Power

Power Requirements	100-240V~50/60Hz
Standby Power	≤0.5W
Max Power Consumption	390W 395W 565W
EU Efficiency Data	177.7W 182.6W 357.8W

I/O port

HDMI IN	3
HDMI OUT	1
USB 2.0	1
USB 3.0	4
USB Type-C	1x USB-C with video, audio, touch, power and hardware optimization supports 65w Charging – front-mounted
TOUCH 2.0	2
VGA IN	1
AUDIO IN	1
AUDIO OUT	1
SPDIF	1
RS232	1
RJ45 IN	1
RJ45 OUT	1

Accessories

Power Cord	x 1
HDMI Cable	x 1
USB Touch Cable (Type A-B)	x 1
Remote Control	x 1
Writing Pen	x 2

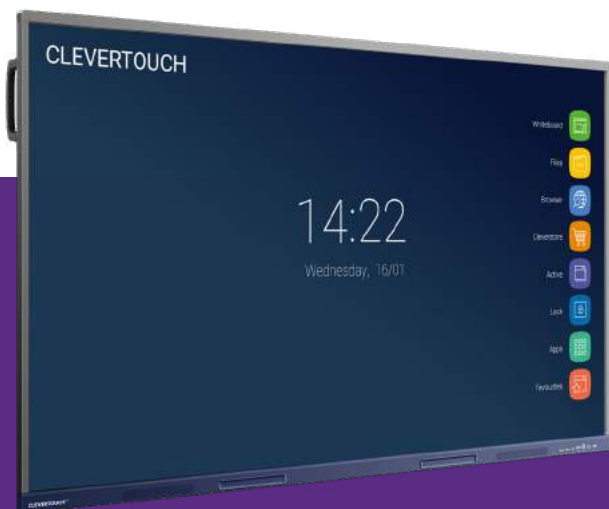
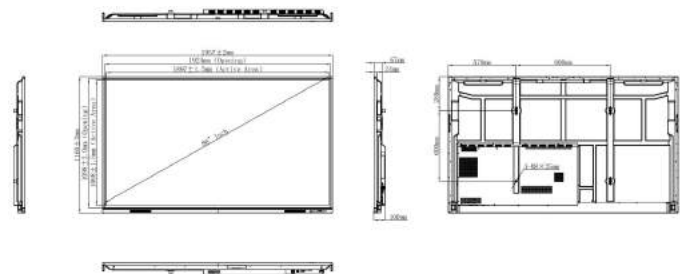
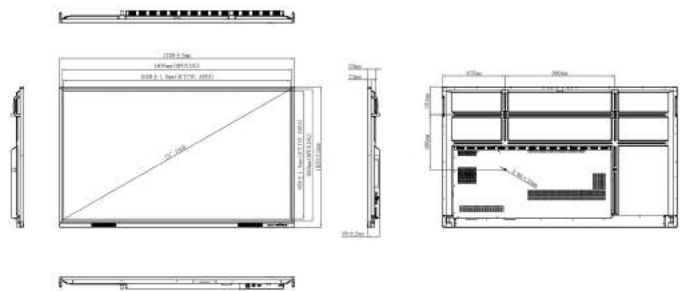
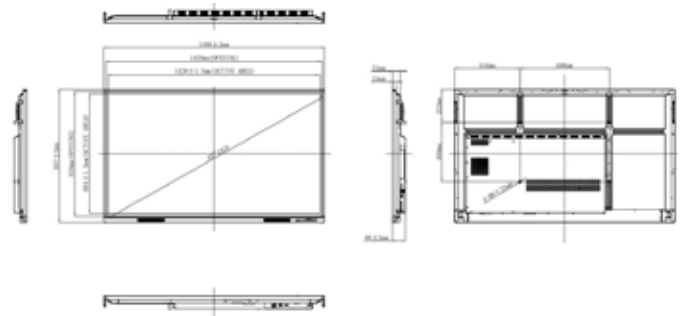
Environmental Conditions

Operation Temperature	0°C~40°C
Operation Humidity	10%~90%RH
Storage Temperature	-20°C~60°C
Storage Humidity	10%~90%RH
Altitude	Below 5000 meters

Optional Module

PC Module	OPS62A
Output Power	SI07B

Dimensions



Statement

Size and weight vary by configuration and manufacturing process, please refer to the actual product. The product images are for illustrative purposes only and may slightly differ in appearance, colour, size, etc. from the actual product. The description, illustrations, etc. in this document may subject to change in accordance with the latest product specification and performance. Should the above-mentioned change in the document become necessary, the document may be updated without written notice.

Digital Ecosystem

A unique digital solution for every space which redefines the way to distribute information and collaborate using technology.



DIGITAL ECOSYSTEM

Reception Foyer
Digital Signage
Engagement Messaging



Way-finding
Directional Screen
Branding



Commercial Displays
Inform / Educate /
Promote



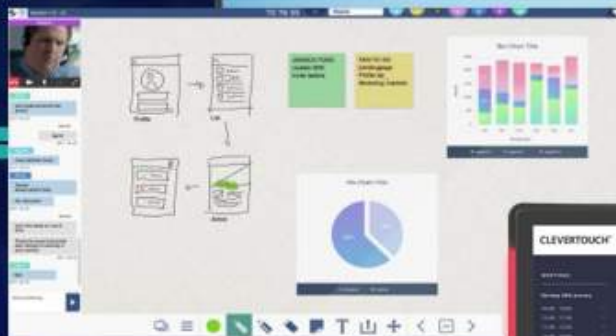
Infinity Whiteboard
Create documents
anywhere, with LYNX
Whiteboard



Room Booking
Centralized Room
Booking Panels



One-touch updates
Control what's on the
screen from your
mobile device



Our products work
together to help your
business function smarter!

QR Codes
Enhance your audience
experience with
interactive QR Codes
in presentations.

About us

Who are Clevertouch

Established in 2009, Clevertouch Technologies were the first interactive flat panel in the education market.

Clevertouch Technologies has offices worldwide, in UK, Finland, Sweden, the Netherlands, USA and Australia, confirming our position as the number one global brand for interactive flat panels in the global education market. Partnered with leading technology brands including Intel, Logitech, LYNX Whiteboard, DisplayNote and NUI TEQ Snowflake, IMPACT Max is the ideal solution for classrooms and beyond. With our roots dating back to the 1920s and a history as a family-owned company, now Clevertouch Technologies is proudly owned by USA based Boxlight Inc.



Bett Awards Finalist
2018 & 2019
Digital Devices



AV News Awards Winner 2018, 2019 & 2020
Collaboration Innovation / Product of the Year 2018 & 2020
AV Display Innovation of the Year 2019



ISTE and Infocomm
Best of Show Awards Winner
Tech and Learning 2018, 2019, 2020
AV Technology 2019 & 2020
Installation 2020



ISE Best of Show Winner 2020
Installation Award
AV Technology Award



AV Awards Winner
Interactive Screen of the Year
2016, 2017 & 2019
Manufacturer of the Year 2015

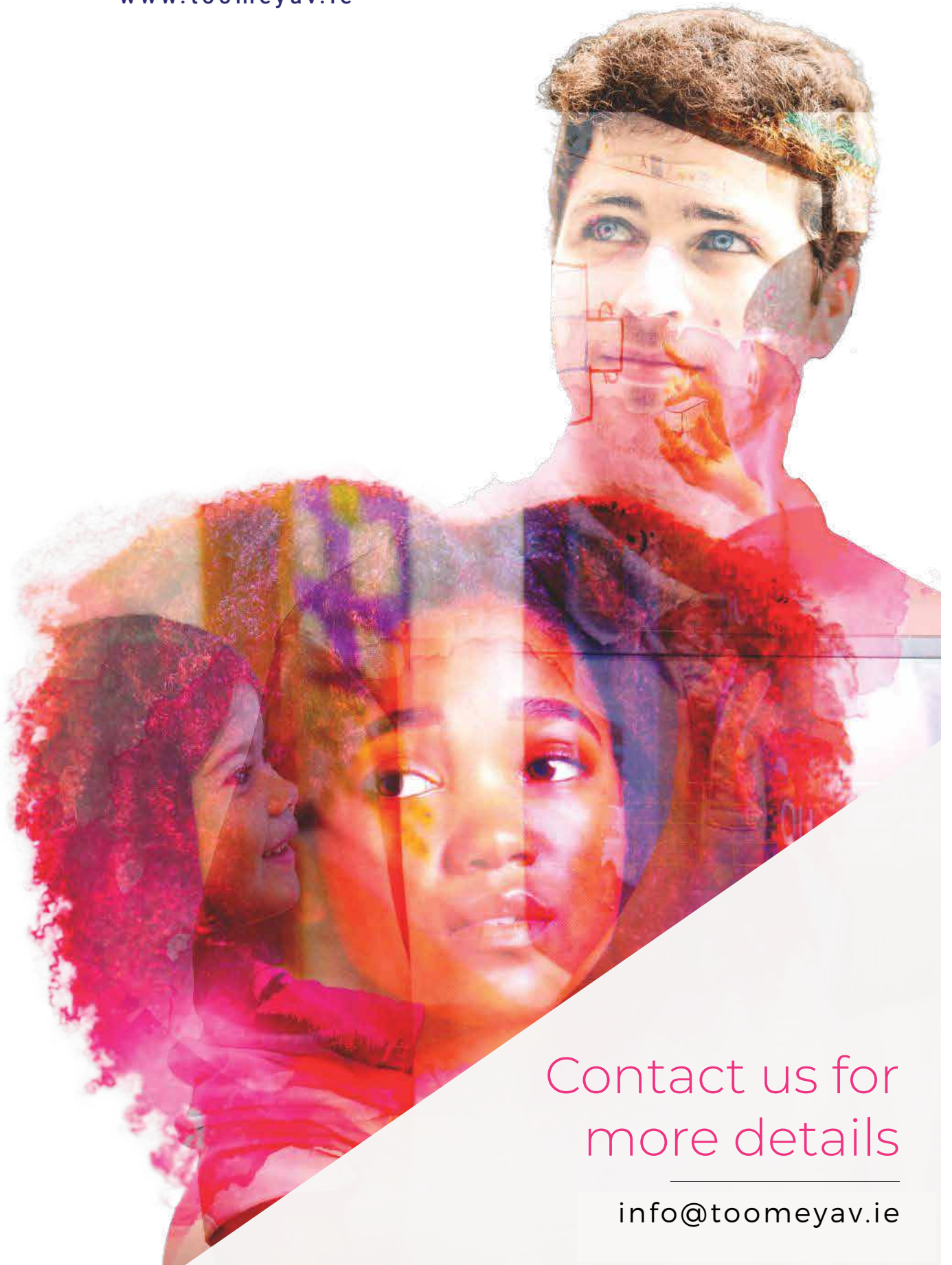


Inavation Awards Winner 2018 & 2019 & 2021
Technology for Collaboration and Conferencing Interactive
Display Product / Best Business Growth 2021



Why Choose Clevertouch Technologies?

- ✓ Trusted Brand
- ✓ No ongoing cost
- ✓ Free training
- ✓ Part of a Digital Ecosystem of products – control them all from one online platform
- ✓ Supports Remote Learning
- ✓ Dedicated Support Team
- ✓ Free updates and new features



Contact us for
more details

info@toomeyav.ie